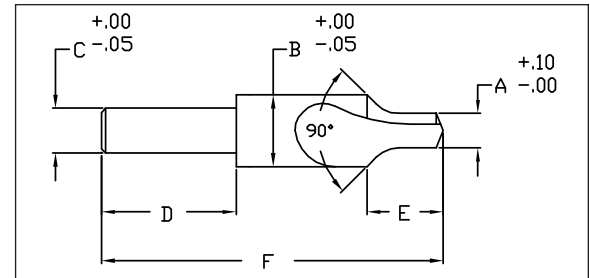


Countersink Straight Shanks (Metric)

The LINK countersink features a 90° angle to allow sufficient clearance for drilling and chamfering for flat head and oval head screws. They have a straight shank for standard chucking or a collet holder.



Part No.		Metric Screw	90° Angle					
HSS	HSS - TiN		Drill DIA (A)	Body DIA (B)	Shank DIA (C)	Shank Length (D)	Drill Length (E)	OAL (F)
70-L3-379	70-TN-379	3 mm	3.10	6.35	6.35	–	8.73	44.44
70-L3-380	70-TN-380	4 mm	4.10	8.20	6.35	15.87	11.90	44.44
70-L3-381	70-TN-381	5 mm	5.10	11.20	7.93	15.87	12.70	50.79
70-L3-382	70-TN-382	6 mm	6.10	12.70	7.93	15.87	13.49	50.79
70-L3-383	70-TN-383	8 mm	8.10	17.45	11.11	23.79	18.25	66.66
70-L3-384	70-TN-384	10 mm	10.10	20.63	12.70	28.57	21.43	76.19
70-L3-385	70-TN-385	12 mm	12.10	25.40	15.87	28.57	23.81	76.19