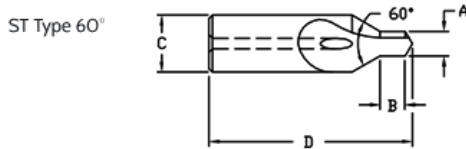
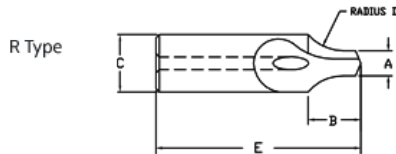


### Single-End Thru-Tool Cooling (TTC) Drill

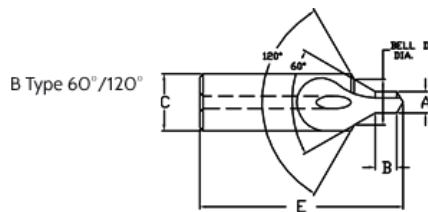
Single-End Cobalt drills now available with Thru-Tool Cooling (TTC). The TTC design offers superior cooling and chip removal characteristics to promote a longer tool life. They are available in ST Type 60°, R Type and B Type 60°/120° forms. Tool coatings available—please call for a quote.



ST Type 60°					
Drill Type	Part No.	Drill DIA (A)	Drill Length (B)	Body DIA (C)	OAL (D)
	COBALT				
4-ST	CO-CH-209	.125	.125	.312	1.250
5-ST	CO-CH-210	.187	.187	.437	1.625
6-ST	CO-CH-211	.218	.218	.500	1.781
7-ST	CO-CH-212	.250	.250	.625	2.125
8-ST	CO-CH-213	.312	.312	.750	2.500



R Type						
Drill Type	Part No.	Drill DIA (A)	Drill Length (B)	Body DIA (C)	Radius (D)	OAL (E)
	COBALT					
4-R	CO-CH-201	.125	.290	.312	.248	1.250
5-R	CO-CH-202	.187	.395	.437	.323	1.625
6-R	CO-CH-203	.218	.460	.500	.407	1.781
7-R	CO-CH-204	.250	.583	.625	.593	2.125
8-R	CO-CH-205	.312	.675	.750	.663	2.500



B Type 60°/120°						
Drill Type	Part No.	Drill DIA (A)	Drill Length (B)	Body DIA (C)	Bell DIA (D)	OAL (E)
	COBALT					
14-B	CO-CH-225	.109	.109	.312	.250	1.250
15-B	CO-CH-226	.156	.156	.437	.350	1.625
16-B	CO-CH-227	.187	.187	.500	.400	1.781
17-B	CO-CH-228	.218	.218	.625	.500	2.125
18-B	CO-CH-229	.250	.250	.750	.600	2.500