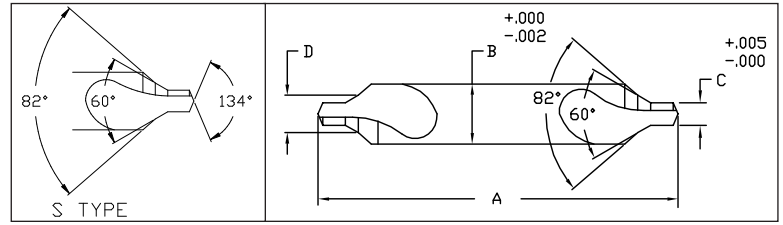


Centerdrill S Type

The S Type Centerdrill is used where a more rigid setup is required for heavier work applications. This drill may also be used as a single-operation tool with its 60° angle followed by an 82° angle flare making it a dual-purpose tool



Drill Type	Part No.							OAL (A)	Body DIA (B)	Drill DIA (C)	Bell DIA (D)
	HSS	HSS-TiN	HSS-TiAlN	HSS-LH	COBALT	COBALT-TiN	COBALT-TiAlN				
OOS	15-L2-045	-	-	-	-	-	-	1-1/4	1/8	.025	.0576
10S	15-L2-046	-	-	11-L2-046	15-CO-046	-	-			1/32	.080
11S	15-L2-047	-	-	11-L2-047	15-CO-047	-	-			3/64	.093
11S3	15-L2-068	-	-	11-L2-068	-	-	-	3	3/16	1/16	.125
11S4	15-L2-069	-	-	11-L2-069	-	-	-	4			
11S5	15-L2-070	-	-	11-L2-070	-	-	-	5*			
11S6	15-L2-071	-	-	-	-	-	-	6*			
12S	15-L2-048	15-TN-048	15-TL-048	11-L2-048	15-CO-048	CO-TN-048	CO-TL-048	1-7/8			
12S4	15-L2-072	-	-	11-L2-072	-	-	-	4	1/4	3/32	.1875
12S5	15-L2-073	-	-	11-L2-073	-	-	-	5*			
12S6	15-L2-074	-	-	-	-	-	-	6*			
13S	15-L2-049	15-TN-049	15-TL-049	11-L2-049	15-CO-049	CO-TN-049	CO-TL-049	2	5/16	7/64	.250
13S4	15-L2-075	-	-	11-L2-075	-	-	-	4			
13S5	15-L2-076	-	-	11-L2-076	-	-	-	5*			
13S6	15-L2-077	-	-	11-L2-077	-	-	-	6*			
14S	15-L2-050	15-TN-050	15-TL-050	11-L2-050	15-CO-050	CO-TN-050	CO-TL-050	2-1/8			
14S4	15-L2-078	-	-	11-L2-078	-	-	-	4			
14S5	15-L2-079	-	-	11-L2-079	-	-	-	5*	7/16	5/32	.312
14S6	15-L2-080	-	-	11-L2-080	-	-	-	6*			
14S54	15-L2-081	-	-	11-L2-081	-	-	-	4			
14S55	15-L2-082	-	-	11-L2-082	-	-	-	5*	1/2	3/16	.437
14S56	15-L2-083	-	-	11-L2-083	-	-	-	6*			
15S	15-L2-051	15-TN-051	15-TL-051	11-L2-051	15-CO-051	CO-TN-051	CO-TL-051	2-3/4			
15S5	15-L2-084	-	-	11-L2-084	-	-	-	5*	5/8	7/32	.4687
15S6	15-L2-085	-	-	11-L2-085	-	-	-	6*			
16S	15-L2-052	15-TN-052	15-TL-052	11-L2-052	15-CO-052	CO-TN-052	CO-TL-052	3	3/4	1/4	
16S5	15-L2-086	-	-	11-L2-086	-	-	-	5*			
16S6	15-L2-087	-	-	11-L2-087	-	-	-	6*			
17S	15-L2-053	15-TN-053	15-TL-053	11-L2-053	15-CO-053	CO-TN-053	CO-TL-053	3-1/4	5/8	7/32	.437
17S6	15-L2-088	-	-	11-L2-088	-	-	-	6*			
18S	15-L2-054	15-TN-054	15-TL-054	11-L2-054	15-CO-054	CO-TN-054	CO-TL-054	3-1/2	3/4	1/4	.4687
18S6	15-L2-089	-	-	11-L2-089	-	-	-	6*			

