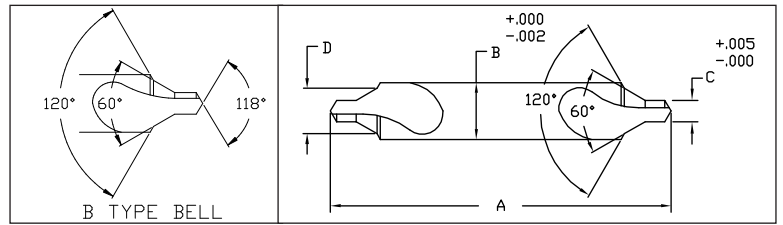


### Centerdrill B Type Bell

The B Type Centerdrill is a dual-purpose drill which includes a 60° angle for burnishing and a 120° flare for chamfering. This drill is used for the heaviest of work applications.



Drill Type	Part No.							OAL (A)	Body DIA (B)	Drill DIA (C)	Bell DIA (D)
	HSS	HSS-TiN	HSS-TiAlN	HSS-LH	COBALT	CO-BALT-TiN	COBALT-TiAlN				
00B	25-L2-135	-	-	-	-	-	-	1-1/4	1/8	.025	.064
OB	25-L2-136	-	-	11-L2-136	25-CO-136	-	-			1/32	.090
11B	25-L2-137	-	-	11-L2-137	25-CO-137	-	-				
11B3	25-L2-158	-	-	11-L2-158	-	-	-	3	3/16	3/64	.100
11B4	25-L2-159	-	-	11-L2-159	-	-	-	4			
11B5	25-L2-160	-	-	11-L2-160	-	-	-	5•			
11B6	25-L2-161	-	-	-	-	-	-	6•			
12B	25-L2-138	25-TN-138	25-TL-138	11-L2-138	25-CO-138	CO-TN-138	CO-TL-138	1-7/8			
12B4	25-L2-162	-	-	11-L2-162	-	-	-	4			
12B5	25-L2-163	-	-	11-L2-163	-	-	-	5•			
12B6	25-L2-164	-	-	-	-	-	-	6•			
13B	25-L2-139	25-TN-139	25-TL-139	11-L2-139	25-CO-139	CO-TN-139	CO-TL-139	2	1/4	3/32	.200
13B4	25-L2-165	-	-	11-L2-165	-	-	-	4			
13B5	25-L2-166	-	-	11-L2-166	-	-	-	5•			
13B6	25-L2-167	-	-	11-L2-167	-	-	-	6•			
14B	25-L2-140	25-TN-140	25-TL-140	11-L2-140	25-CO-140	CO-TN-140	CO-TL-140	2-1/8	5/16	7/64	.250
14B4	25-L2-168	-	-	11-L2-168	-	-	-	4			
14B5	25-L2-169	-	-	11-L2-169	-	-	-	5•			
14B6	25-L2-170	-	-	11-L2-170	-	-	-	6•			
145B4	25-L2-171	-	-	11-L2-171	-	-	-	4			
145B5	25-L2-172	-	-	11-L2-172	-	-	-	5•			
145B6	25-L2-173	-	-	11-L2-173	-	-	-	6•			
15B	25-L2-141	25-TN-141	25-TL-141	11-L2-141	25-CO-141	CO-TN-141	CO-TL-141	2-3/4	7/16	5/32	.350
15B5	25-L2-174	-	-	11-L2-174	-	-	-	5•			
15B6	25-L2-175	-	-	11-L2-175	-	-	-	6•			
16B	25-L2-142	25-TN-142	25-TL-142	11-L2-142	25-CO-142	CO-TN-142	CO-TL-142	3	1/2	3/16	.400
16B5	25-L2-176	-	-	11-L2-176	-	-	-	5•			
16B6	25-L2-177	-	-	11-L2-177	-	-	-	6•			
17B	25-L2-143	25-TN-143	25-TL-143	11-L2-143	25-CO-143	CO-TN-143	CO-TL-143	3-1/4	5/8	7/32	.500
17B6	25-L2-178	-	-	11-L2-178	-	-	-	6•			
18B	25-L2-144	25-TN-144	25-TL-144	11-L2-144	25-CO-144	CO-TN-144	CO-TL-144	3-1/2	3/4	1/4	.600
18B6	25-L2-179	-	-	11-L2-179	-	-	-	6•			
20B	25-L2-146	-	-	-	-	-	-	3-3/4	1	3/8	.800